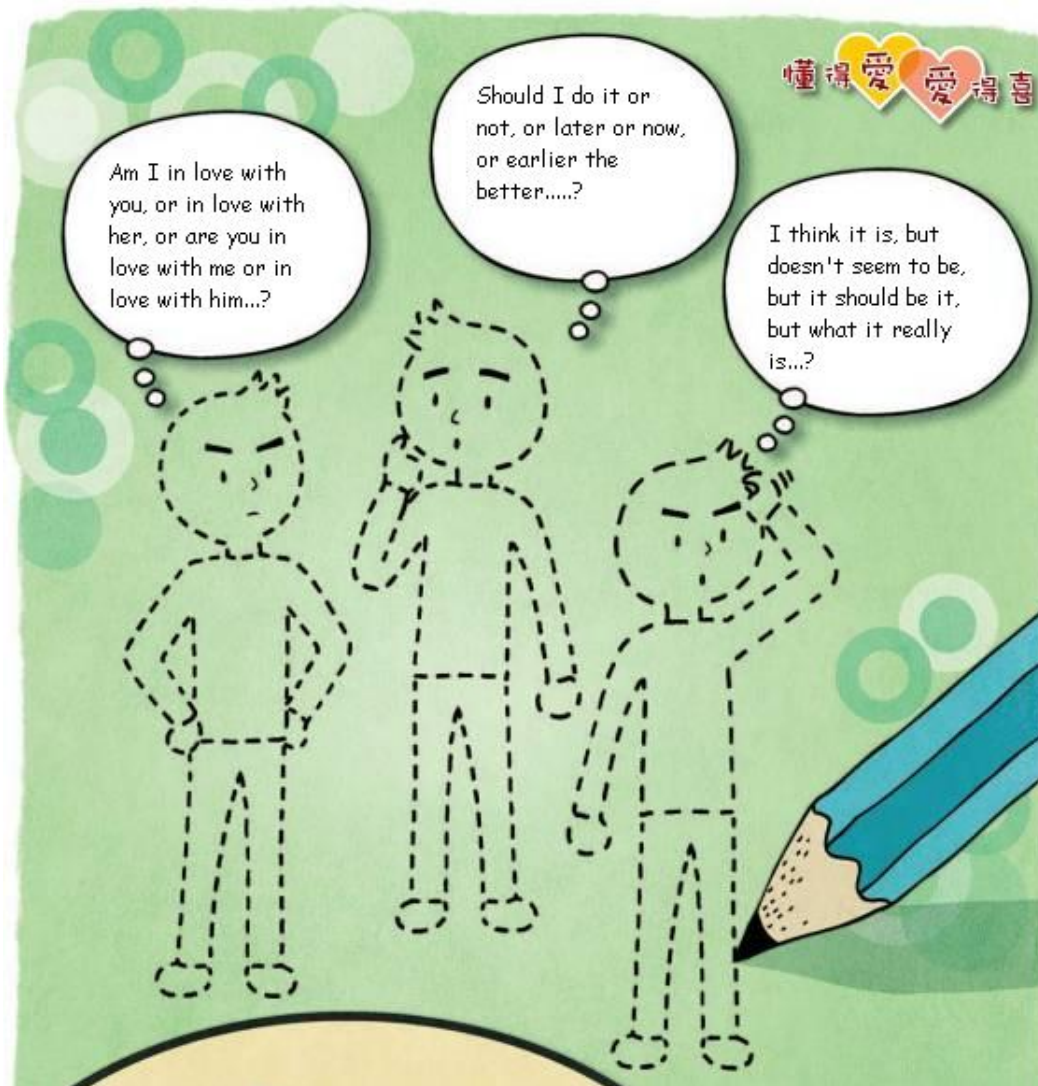


Before you are in love

Pair up in groups. Use one hand only to draw along the dotted lines within one minute, then read the conversation bubbles and answer questions below.



(1) What kind of problems are these people facing? Please write down what you think.

Left : _____

Middle : _____

Right : _____

(2) How do you two manage to finish the above drawing task ? What enabled you to do it efficiently?

(3) What is the message behind? What kind of attitude will enhance a love relationship ?

Before you are in Love

【Discussion Guidelines】:

1. To promote co-operation between sexes, pair up a male and a female student in a group for this drawing activity, if possible.
2. For Question 1, it aims to help students to think what a person needs to equip before going into a love relationship. The figure on the left stands for “Assurance of Self and Relation”. Since query of confidence and self-confidence always exists in love relationship, it is important to know yourself and your dating partner well. The figure in the middle stands for “Judgment of Behavior” which implies a person needs to develop right attitude and ability to deal with problems. And the figure on the right stands for “Cognition of Feelings and Values”, which implies a person’s ability to understand his/her feelings and willingness to introspect one’s values.
3. For Question 2, it aims to promote communication skills that will enhance relationship among people. Teachers may guide students to think if they had rushed to finish the drawing activity while neglecting the feelings of the team partner ?
4. In fact, having one person is good enough to finish the drawing activity. What love really means is looking for mutual-understanding and common interests between couples. And very often, it takes time and patience to observe and to understand the other. Remember, acquire a healthy attitude before going into a love relationship.
5. Give compliments to students who are willing to share opinions. Encourage them to think what a healthy love relationship is.